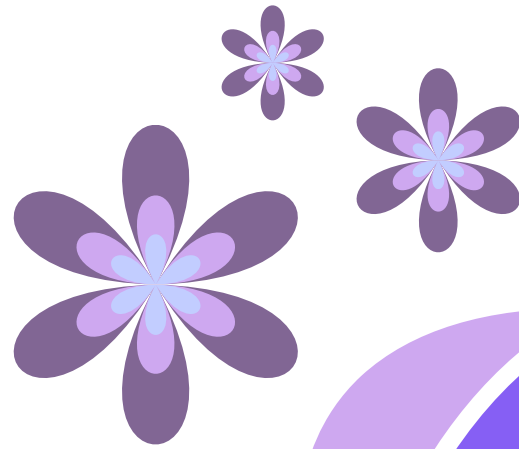


# CIRCUIT RIDER



APRIL 2026

LANSDALE UNITED METHODIST CHURCH  
300 N. BROAD ST. LANSDALE, PA 19446

WEBSITE: [LANSDALEUMC.ORG](http://LANSDALEUMC.ORG)

EMAIL: [OFFICE@LANSDALEUMC.ORG](mailto:OFFICE@LANSDALEUMC.ORG)

## FROM THE PULPIT

THROUGH THE VALLEY  
1 CORINTHIANS  
EASTER SERVICE  
CHURCH COUNCIL DATES

## MAKING DISCIPLES

WOMEN'S MINISTRY  
MEN'S BREAKFAST  
SUNDAY SCHOOL CLASS LIST

## CHILDREN + YOUTH

OPEN GYM NIGHT  
EASTER EGG HUNT  
CHILDREN'S CHOIR

## SERVING OTHERS

UMCOR SUNDAY  
VBS SAVE THE DATE  
SAFE SANCTUARY TRAINING  
ADDAM'S FAMILY  
BLOOD DRIVE  
CRAFT FAIR  
REDNER'S

WORSHIP SUNDAY  
MORNINGS AT 9 AM

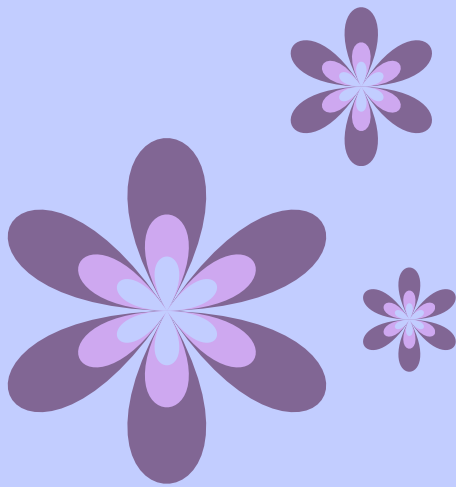
LIVE STREAMED  
ON FACEBOOK  
OR YOUTUBE



# APRIL

COME SHE WILL  
WHEN STREAMS  
ARE RIPE  
AND SWELLED  
WITH RAIN

• SIMON + GARFUNKEL



## A NOTE FROM THE PASTOR

PASTOR MARLEAH

Welcome back to this month's newsletter! As you know, April showers bring May flowers - and I think we could all do with some warmer, flower filled days soon!

Let's enjoy the showers while we have them! Shake off the dead of winter and look forward with renewed energy!

Lansdale UMC cannot wait to show you what we have in store for the warmer months! VBS, retreats, block parties, and more!

Sometimes the first rays of sunshine are all it takes to remind us who we are and to help us come back alive! Enjoy the journey!

I am reminded about the Simon and Garfunkel song, "April Come She Will" - the showers will come, the flowers will bloom, and God is still on the throne - amen!

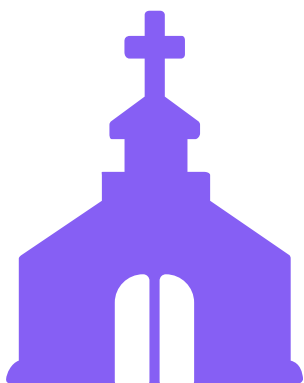
## A LETTER FROM THE EDITOR

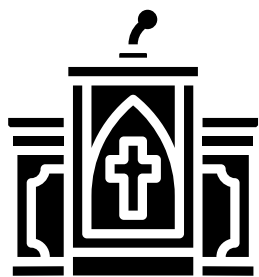
Hello Lansdale family! I am popping in here to announce a small change in this edition of the Circuit Rider!

Though our mission remains unchanged, the format and organization of the newsletter has been altered for the ease of our guests! The events you know and love are now located under their respective event type such as 'Kids + Christ' for children's ministry or 'From the Pulpit'!

Explore, stay connected, and God bless!

X COURT





# FROM THE PULPIT



April 5: Lament & Joy



April 8 - August 9

## CHURCH COUNCIL DATES

*April 13*

*June 8*

*August 10*

*October 12*

*December 14*

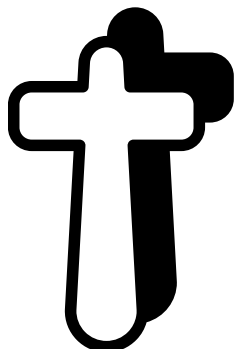
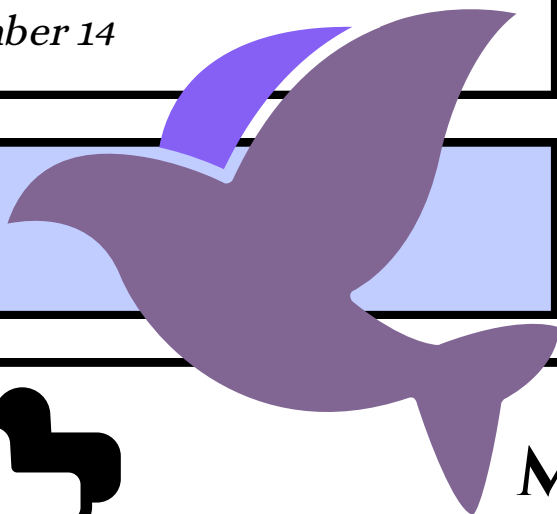
7 PM  
Conference  
Room

April 5 .....

April 12 .....

April 19 .....

April 26 .....



## MEMBERSHIP CLASSES

If you are interested in becoming a member of LUMC, talk to Pastor Marleah for more information! Classes will be held during regular sunday school hours each Sunday!



# MAKING DISCIPLES

## Sunday School Classes 2026

### WESLEYAN CLASS - LUMC LIBRARY

**Parables and Lessons in the Gospel of Luke:** The Wesleyan class meets in the LUMC Library with comfortable seating and discussions based on the Sunday Lectionary Readings in Luke  
All are welcome to join!

### NEW HORIZONS - ROOM A206 (UPSTAIRS)

New Horizons Adult Sunday School class is a discussion format group using video and other media materials as a basis for our discussions. Our discussion topics vary and include the history of the creation of favorite hymns, study series from various authors and sources and seasonal topics appropriate throughout the church year. Everyone is welcome to visit / join the class which meets in room A206 following the fellowship time.  
Talk to Warren Shaedle for more information!

### UPPER ROOM - ROOM A207 (UPSTAIRS)

Join us to talk through God's Word and get to know the group! Right after church and fellowship! The Upper Room class will start the year by finishing the series "Through the Eyes of a Lion" by Levi Lusko. It's a video series that chronicles the loss of his five-year-old daughter and how it affected their family and deepened their faith.  
Talk to Darren Johnson for more information!

### YOUTH SUNDAY SCHOOL (CONFERENCE ROOM)

For 5<sup>th</sup> grade and up, the Youth meet after church every Sunday in the conference room.  
All youth are invited!  
Talk to Esau Collins for more information!

### CHILDREN'S SUNDAY SCHOOL (A205)

All children through 4<sup>th</sup> grade are welcome to join Liz for Sunday school after fellowship time! Talk to Liz Bonner for more information.

All are welcome to join any of these classes! Sunday school classes typically meet after fellowship!

# UNITED WOMEN IN FAITH

Women in Faith meets every 3<sup>rd</sup> Monday at 12 PM in the conference room. Please bring a lunch to enjoy as we engage in activities to grow closer to one another and God!

This month, we are collecting donations of canned tuna or other canned meats for Manna on Main Street!

Save the Date!

**Nov. 6-8**

The United Women in Faith will be going on a retreat !

For more information, talk to Maryellen Reinmiller!



Stringer Hall  
9 AM  
Saturday  
April 18

Save the Date!

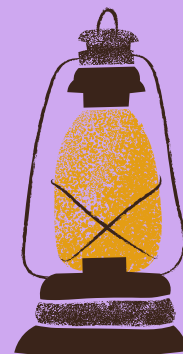
Nov. 6-8

The Men's Retreat will be here before you know it!

Talk to Ed Hartmann or Todd Harper for more information!

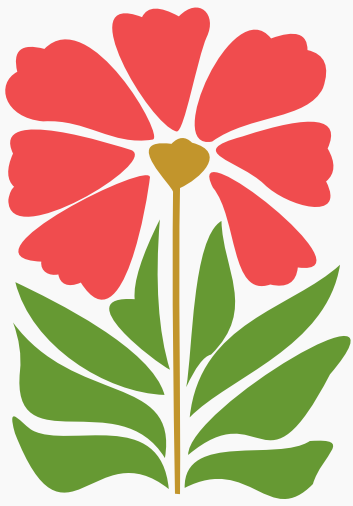
Join UMM for a chance to get some good food, and good conversation!

UMM meets every other month for a breakfast together at 9 AM.



Men's  
Breakfast

## UNITED MEN'S MINISTRY



# Kids + Christ

LUMC Children's Ministry

## OPEN GYM NIGHT

Every 3<sup>rd</sup> Friday  
6-8 pm



calling all kids,  
teens, and young  
adults for fun, fun  
and more fun!



## CHILDREN'S CHOIR



EVERY SUNDAY 10:20AM

MISS LIZ IS EXCITED TO ANNOUNCE THE KIDS AND YOUTH WILL BE LEARNING SOME FUN MUSIC ON SUNDAYS AND WILL BE SHARING IT WITH THE CONGREGATION EVERY OTHER MONTH. WE WILL BE PRACTICING TOWARDS THE END OF FELLOWSHIP TIME IN THE UPSTAIRS SUNDAY SCHOOL ROOM. IF YOUR CHILD DOES NOT STAY FOR SUNDAY SCHOOL, YOU CAN PICK THEM UP AT 10:30!

April 17, 2026

May 15, 2026

June 19, 2026

PLEASE BRING  
YOUR OWN  
BASKET!

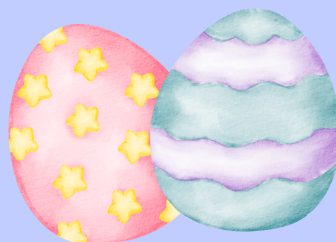
Registration  
form available at  
[lansdaleumc.org!](http://lansdaleumc.org)

# EASTER EGG HUNT

SATURDAY, APRIL 4

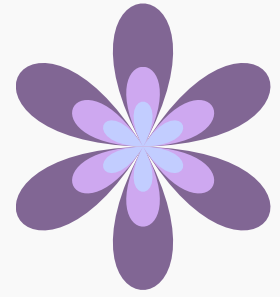
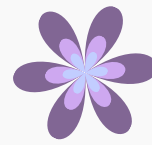
Breakfast - 9 AM

Egg Hunt - 10 AM



Join us for a light  
breakfast and a chance  
to meet the Easter  
Bunny!

# SERVING OTHERS



## Camp Innabah

The Missions emphasis for April will support United Methodist Camps. LUMC has had relationships with Camp Innabah and Pocono Plateau, we will designate the money for those two camps. Camp Innabah's mission is to provide experiences that last a lifetime in an environment where campers and guests can make new friends, challenge themselves, and explore and grow in their faith.

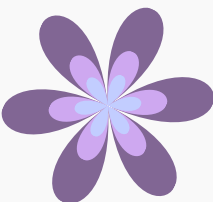

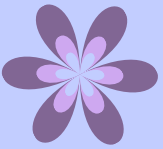
Innabah Camp and Retreat Center, located in Spring City, Chester County, creates opportunities for people of all ages to explore their faith in a beautiful setting, build friendships, and enjoy the whole camp experience on a 149-acre property. Camp Innabah facilities and resources serve a wide variety of groups and individuals. This includes overnight camps, day camps for children, and retreat options for people of all ages. Both Camps are great facilities that offer important programs for youth and adults. Operating these camps is a financial challenge. They would appreciate any support that we can offer. The Website links are below.

<https://www.innabah.org/>

<https://www.poconoplateau.org/>



*Employee Owned*  
**Redner's**  
**WAREHOUSE MARKETS**  
*Servina Our Local Communities Since 1970*



United Women in Faith is still collecting Redner's receipts which are tallied and submitted to Redner's. In return we receive 1% of our totals by check. This is one of our "fund-raisers", which we use to donate monies to local/international mission organizations. You must use your Redner's Store Card when you shop and turn in the whole receipt by putting it in the "phone booth" near the stairs to the sanctuary. Thank you all for participating. Contact Marilyn Snyder at **215-393-5583**, with any questions.



# CRAFT FAIR


SATURDAY, NOV. 14  
9 AM - 2 PM

From unique jewelry and home décor to delicious treats and cozy textiles, there's something for everyone!

215-855-8364  
craftfair@lansdaleumc.org  
300 N Broad Street Lansdale PA 19446

**AMERICAN RED CROSS BLOOD DRIVES**  
EVERY DROP COUNTS DONATE BLOOD.

**1 - 6 PM**



Monday, April 27  
Monday, July 6

## SPRING WORK DAY

April 25  
8 AM - 1 PM

Help us take care of the building and land that keeps us going!

There will be plenty to do from cleaning indoors to yardwork!



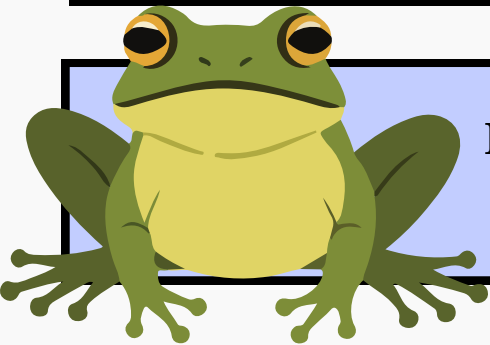

June 22-26, 2026

# RAINFOREST FALLS

Exploring the Nature of God



**VBS will be here before you know it!**



Register for VBS online at [lansdaleumc.org](http://lansdaleumc.org)

**VBS & Safe Sanctuary Training - June 21  
11:30 AM in Stringer**

## CONFERENCE AND DISTRICT NEWS

EAST DISTRICT NEWS:

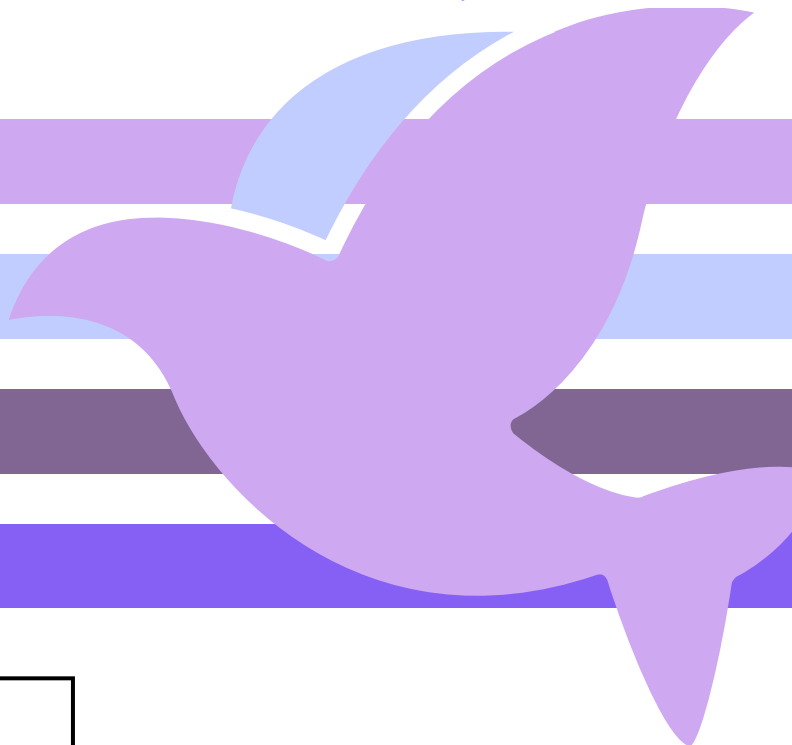
[HTTPS://WWW.EPAUMC.ORG/EAST-DISTRICT/EA-DISTRICT-E-ALERTS/](https://www.epaumc.org/east-district/ea-district-e-alerts/)

EPA CONFERENCE NEWS:

[HTTPS://WWW.EPAUMC.ORG/NEWS/](https://www.epaumc.org/news/)

## NEXT NEWSLETTER

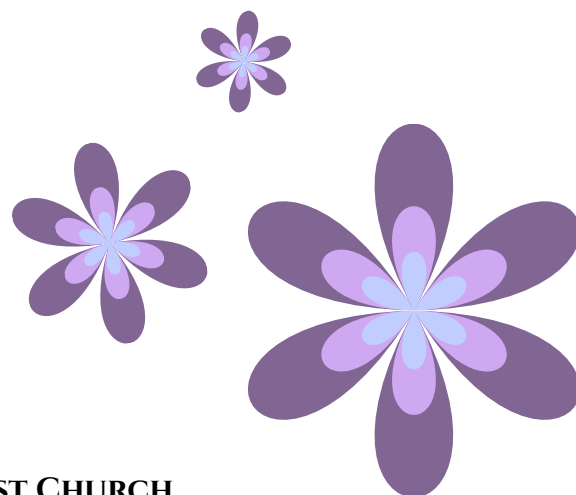
THE NEXT CIRCUIT RIDER NEWSLETTER IS IN THE WORKS FOR MAY! PLEASE SEND YOUR ARTICLES FOR INCLUSION TO THE CHURCH OFFICE BY **APRIL 20, 2025**.



<b>April</b>	<b>Liturgist</b>	<b>Ushers</b>
<b>5</b>	<b>Liz Bonner</b>	<b>Ed Ingram, Ed Hartmann, Gary Silknitter</b>
<b>12</b>	<b>Verna Colliver</b>	<b>Warren Shaedle, Todd Harper, Wayne Doyle, Sabah Furniturwala</b>
<b>19</b>	<b>Luann Ingram</b>	<b>Geri Hare, Michelle Dasch, Cathy Kennedy, Kathy Herbert</b>
<b>26</b>	<b>Paul Bonner</b>	<b>Barry McGuire, Neil Hagenbuch, Alan Dickel</b>

### WAYS TO GIVE

1. MAIL SLOT ON 4TH STREET
2. MAIL TO CHURCH ADDRESS
3. [WWW.LANSDALEUMC.ORG/GIVING](http://WWW.LANSDALEUMC.ORG/GIVING) ON REALM
4. TEXT LANSDALEFIRSTUMC TO 73256



## LANSDALE UNITED METHODIST CHURCH

PRAISING GOD - MAKING DISCIPLES - SERVING ALL

300 N. BROAD ST, LANSDALE, PA 19446

PHONE: 215-855-8364

EMAIL: [OFFICE@LANSDALEUMC.ORG](mailto:OFFICE@LANSDALEUMC.ORG) | WEBSITE: [LANSDALEUMC.ORG](http://LANSDALEUMC.ORG)