

# **Lansdale United Methodist Church**

## **July 12, 2020**



Van Gogh, Sower, 1888, France

**300 N. Broad Street • Lansdale, PA • 19446**

# **Sixth Sunday after Pentecost**

## **9:00 a.m. LiveStream Worship Service**

**Pre-Service Music**

Ruth Rineer

**Greeting and Welcome**

Pastor Bill Lentz

We're glad you're attending our live stream service of worship. Your presence is a joy. We hope you feel welcome and essential to us. We pray that the Spirit of God will touch your soul as we worship. Please send an e-mail to [office@lansdaleumc.org](mailto:office@lansdaleumc.org) to let us know you "attended" today! Thanks!

**Prelude**

*Wonderful Grace of Jesus*

**Call to Worship**

**Song**

*My Life Is in You*  
Ruth Rineer and Wayne Wylie

TFWS 2032

**Opening Prayer**

**Readings**

Isaiah 55:10-13; Matthew 13:1-9, 18-23

**Sermon**

**Song**

*I Want Jesus to Walk with Me*

UMH 521

**Call to Generosity and Prayers**

Your offering to God through Lansdale Church touches lives, heals brokenness, expresses trust in God to provide for your future, and praises God for all you have in this life. Thank you for giving generously! Send a text message contribution to 73256 with the message *LansdaleFirstUMC*, or use the QR Code to donate electronically.



**Song**

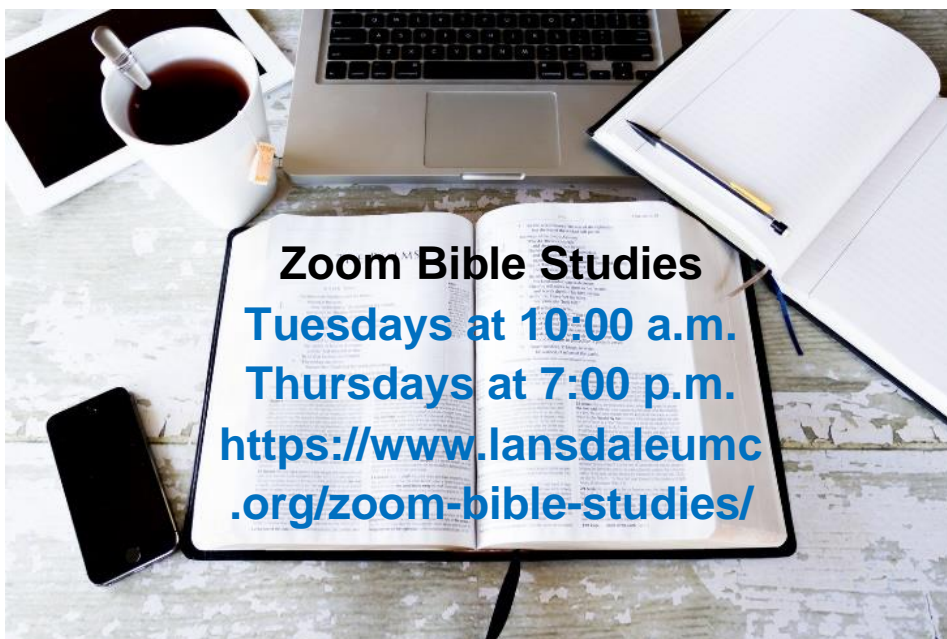
*Thy Word Is a Lamp unto My Feet*

UMH 601

**Blessing**

*And Can It Be*

**Postlude**



**CONVERSATION ON RACE CONTINUES!**

**CHECK LATEST EDITION OF THE e-CR FOR INFO.**

**SUNDAY, JULY 19, 2020**

**6:00 P.M.**

**ZOOM MEETING**





## **COVID-19 UPDATE**

### ***Commonwealth in Phase Green***

**Shift to Phase Green:** On June 26th, the Commonwealth of PA shifted Montgomery County to Phase Green. LUMC will remain in its current status of closed to all activity until further notice, except for the LiveStream service on Sunday mornings and other approved exceptions made by the Pastor or the Trustees. Once in Phase Green, faithful, prudent, and safe decisions will be announced when applicable. There is no definite timetable for reopening the church in the early portion of Phase Green. In the meantime, please commit yourselves to prayers for all those who have suffered personal and economic losses during the pandemic crisis.



**E-mail**  
**[office@lansdaleumc.org](mailto:office@lansdaleumc.org)**  
**For the Zoom Link**



### ***Happy Birthday to You!***

Jimmy Spencer (7/11)  
Teagan Prince (7/13)  
Laurie Snyder (7/16)  
James Burroughs (7/16)  
Dennis Nwogwugwu (7/18)  
Julianne Wylie (7/18)  
Ida Kitz (7/19)

Casey Slotter (7/19)  
Cody Fultz (7/19)  
Casey Malone (7/19)  
Jana Cole (7/20)  
Janet Harper (7/21)  
Trisha Dickson (7/21)  
Michelle Johnson (7/21)

Connie Barnes (7/24)  
Jeff Beideman (7/25)  
Bill Scheetz (7/27)  
Nevin Shaw (7/27)  
Dylan Regino (7/27)  
Niki Malone (7/29)  
Dottie Eckert (7/30)

### ***Happy Anniversary to You!***

Kelly & Terry Cook (7/16)  
Kerri & Rich Joyce (7/19)

Julie & Roger Ranck (7/20)  
Kathy & Pastor Bill (7/25)



## ***July's Mission Emphasis - Laurel House***



Laurel House is a comprehensive domestic violence agency serving individuals, families and communities throughout Montgomery County, Pennsylvania. The agency's name was selected because of the beauty of the laurel, Pennsylvania's state flower. It represents a victory for people who have taken the courageous first step of reaching out to Laurel House in their efforts to build a violence-free life for themselves and their children.

<https://laurel-house.org/>

You can support July's Mission Emphasis in three ways: Snail mail your check payable to LUMC, memo: Laurel House in your Blue Envelope or give through [www.lansdaleumc.org](http://www.lansdaleumc.org), click the dropdown menu to find UMCOR Covid-19 or text message your gift to 73256 with the message "LansdaleFirstUMC." Thank you for your generous support!



The Lansdale UMC Children's Ministry is on Facebook!! Watch Miss Liz LiveStream Sunday School each Sunday after worship, around 10:00 a.m., on this page. She also posts interesting items for our children to watch, read, and do throughout the week. Please join us at:

[https://www.facebook.com/groups/241109070378545/?ref=br\\_rs](https://www.facebook.com/groups/241109070378545/?ref=br_rs)



### **How to Contact Us**

**Pastor Bill Lentz** for any Pastoral Needs: 484-767-2352 or  
[pastorbill@lansdaleumc.org](mailto:pastorbill@lansdaleumc.org)

**Becky Conrad**, Administrative Assistant: 215-855-8364 or  
[office@lansdaleumc.org](mailto:office@lansdaleumc.org)

# **Seventh Sunday after Pentecost**

## **9:00 a.m. LiveStream Worship Service**

**Pre-Service Music**

Ruth Rineer

**Greeting and Welcome**

Pastor Bill Lentz

We're glad you're attending our live stream service of worship. Your presence is a joy. We hope you feel welcome and essential to us. We pray that the Spirit of God will touch your soul as we worship. Please send an e-mail to [office@lansdaleumc.org](mailto:office@lansdaleumc.org) to let us know you "attended" today! Thanks!

**Trio Prelude**

Rays Koshy, Ruth Rineer, Wayne Wylie

**Call to Worship**

**Trio Song**

**Opening Prayer**

**Readings**

Romans 6:15-18; Matthew 13:24-30

**Sermon**

**Trio Song**

**Call to Generosity and Prayers**

Your offering to God through Lansdale Church touches lives, heals brokenness, expresses trust in God to provide for your future, and praises God for all you have in this life. Thank you for giving generously! Send a text message contribution to 73256 with the message *LansdaleFirstUMC*, or use the QR Code to donate electronically.

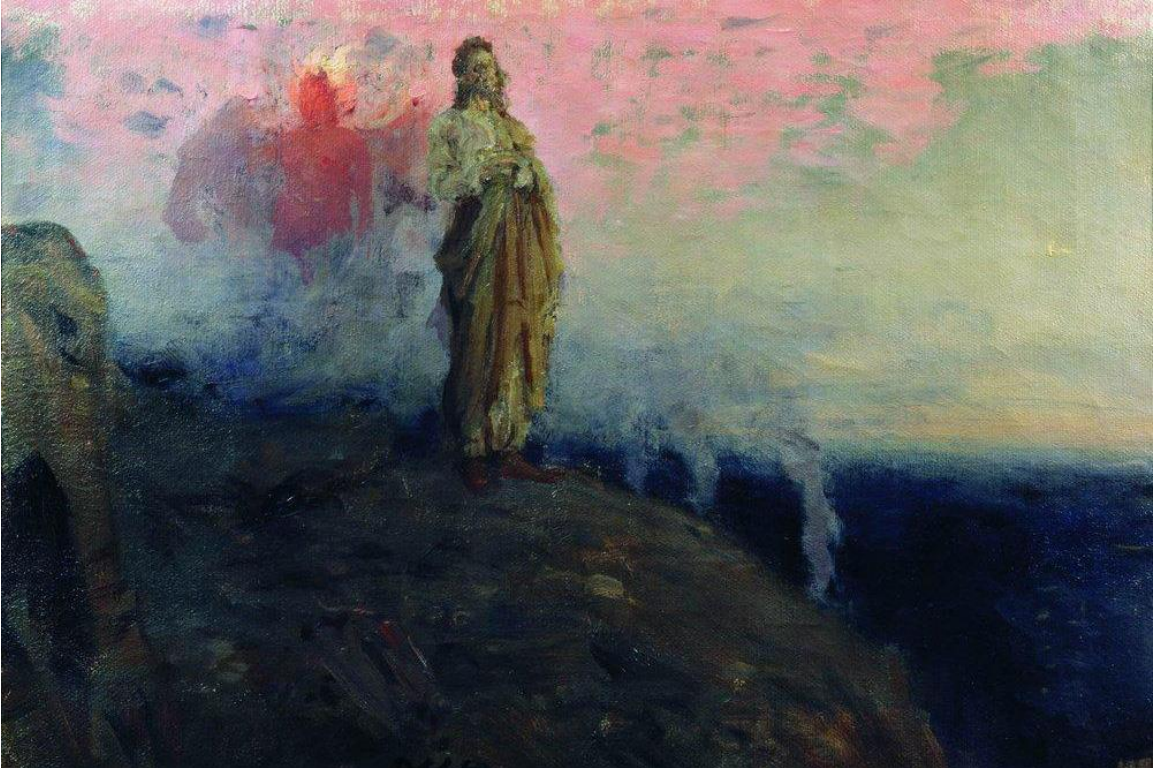


**Trio Song**

**Blessing**

**Trio Postlude**

**Lansdale United Methodist Church  
July 19, 2020**



Ilya Repin, *Jesus and Satan*, 19<sup>th</sup> c.

**300 N. Broad Street • Lansdale, PA • 19446**